



81 Black Prince Road, London  
SE1

GARTONJONES.COM





81 Black Prince Road, London  
, SE1

GARTON JONES.COM

9 Albert  
Embankment  
London  
SE1 7SP

Lettings:  
+44 (0) 20 7735 1888  
nineelms@gartonjones.com  
www.gartonjones.com

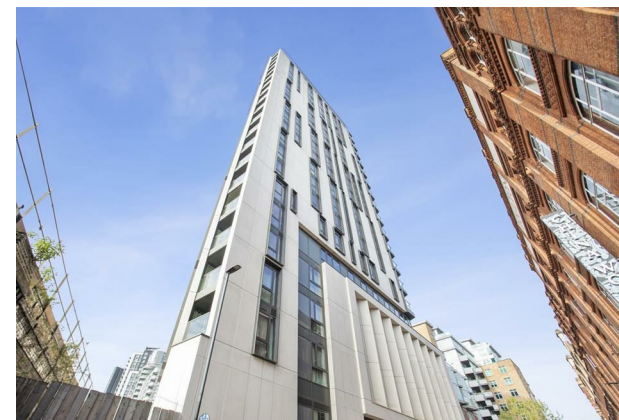
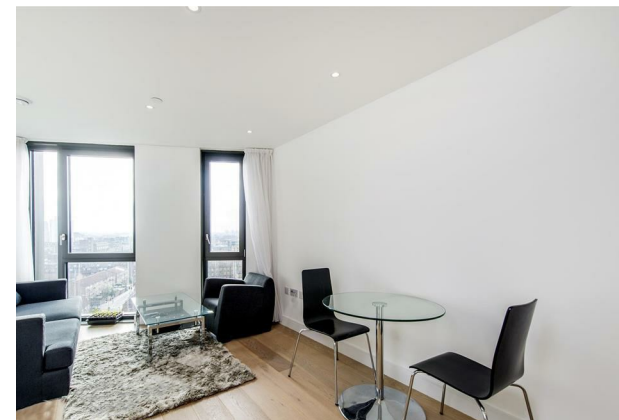
£550 Per Week

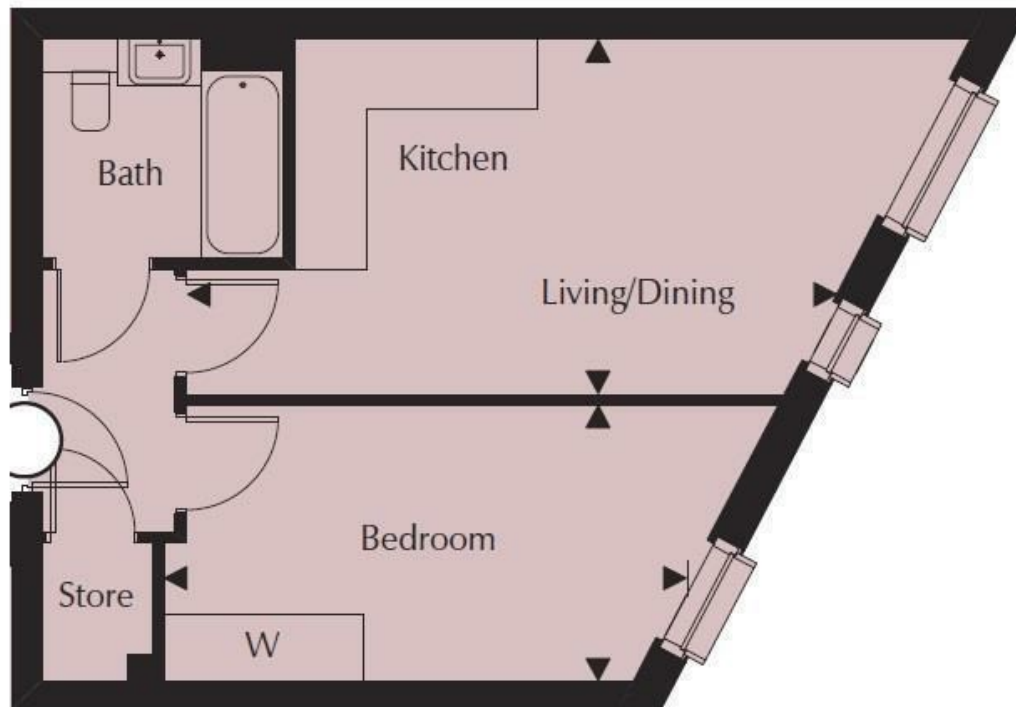
A 1-bedroom apartment of 435sq.ft (40,27sq.m) in Parliament House, offering South facing views. The apartment is furnished to a high standard and comprises an open plan reception room, modern integrated kitchen, double bedroom, luxury bathroom and good storage. Residents also enjoy a concierge service, exclusive gymnasium, designer interiors and cycle storage. Parliament House is a 23-storey tower within easy reach of the excellent transport services of Vauxhall including rail, tube, and bus links as well as a river taxi pier at St George Wharf. London's trendy South Bank is also close by.

Disclaimer: Please note that this building is scheduled to undergo cladding remedial works in the near future. While every effort will be made to minimise inconvenience, potential disruption may occur during these works. Further details can be provided upon request.

- Electricity Supply — Mains | Water Supply — Mains | Sewerage — Mains | Heating — Underfloor Heating
- Broadband & Mobile Signal : Check Coverage via Ofcom
- No Parking
- Lift Access
- Building Safety: Parliament House does not currently hold a satisfactory EWS1 rating and remedial works are required, however, there are interim measures in place
- Council Tax Band E (London Borough of Lambeth)
- 5 Week Security Deposit
- Holding deposit equivalent to 1 week of rent
- Rent to be payable monthly in advance
- EPC Rating TBC — previously B (81)

- 1 Bedroom
- 435sq.ft (40,2sq.m)
- 1 Bathroom
- Open Plan Reception Room
- Modern Integrated Kitchen
- South Facing Aspect
- Concierge
- Residents Gym
- Cycle Storage
- 0.6 Miles from Vauxhall Station





#### APARTMENT

Kitchen/Living/ Dining	5.88m x 3.24m	19'3" x 10'7"
Bedroom	4.75m x 2.49m	15'7" x 8'2"
<b>Total Area</b>	<b>40.4 sq m</b>	<b>435 sq ft</b>



